



A RUTHMAN COMPANY

Gusher Pumps is a Division of

Ruthman Companies

Corporate Headquarters

1212 Streng Street

Cincinnati, OH 45233

Phone: 513-559-1901

Fax: 513-559-0035

Web: www.ruthmancompanies.com

Gusher Pumps of Dry Ridge

22 Ruthman Drive

Dry Ridge, KY 41035

Phone: 859-824-5001

Fax: 859-824-3011

Web: www.gusher.com

Gusher Pumps of Williamstown

115 Industrial Drive

Williamstown, KY 41097

Phone: 859-824-3100

Fax: 859-824-7248

Web: www.gusher.com

Gusher Pumps of Cincinnati

1212 Streng Street

Cincinnati, OH 45233

Phone: 513-559-1901

Fax: 513-559-0035

Web: www.gusher.com

Gusher Pumps of California

8226 Salt Lake Avenue

Cudahy, CA 90201

Phone: 323-773-0847

Fax: 323-773-0958

Email: gusherca@aol.com

Gusher Pumps of New Castle

403 North Ninth Street

New Castle, IN 47362

Phone: 765-529-5624

Fax: 765-521-0008

Email: gusherpump@insightbb.com

BSM Pump Corp.

180 Frenchtown Road

North Kingstown, RI 02852

Phone: 401-471-6350

Fax: 401-471-6370

Web: www.bsmump.com

Nagle Pumps

1249 Center Avenue

Chicago Heights, IL 60411

Phone: 708-754-2940

Fax: 708-754-2944

Web: www.naglepumps.com

Wagner Processing – Bay Area

23510 Bernhardt Street

Hayward, CA 94545

Phone: 510-786-3929

Fax: 510-786-3722

Web: www.wagnerprocess.com

Ruthman... Another Word for Innovation



the first vertical ball bearing sealless centrifugal pump, Ruthman Pump and Engineering furthered the design on a unit with a one piece motor driven shaft. The pump was called "Gusher", giving birth to the trade name Gusher Pumps, and the coining of the term "coolant pump".

Wanting to carry on the tradition of quality and reliability started by his father, Thomas R. Ruthman joined the company in 1949. In the early 1990's Thomas R. Ruthman's son, Thomas G. Ruthman joined the company, continuing this same tradition. Maintaining the reputation of Gusher Pumps by innovation and customer service, the company has grown to service companies worldwide.

It began in 1913, servicing mechanical components of the steamboats on the Ohio River. The company founder, Alois Ruthman, was a man of vision and saw part of the future of the company was in the development of a reliable industrial pump.

In 1924, with the conception of

Wagner Processing – Central Valley

3675 N. Wilcox Street #C

Stockton, CA 95215

Phone: 209-931-0100

Fax: 209-931-7910

Web: www.wagnerprocess.com

Great Lakes Pump & Supply Co.

1075 Naughton

Troy, MI 48083

Phone: 248-528-9100

Fax: 248-528-9015

Web: www.greatlakespump.com

Process Systems, Inc.

23633 Pinewood

Warren, MI 48091

Phone: 586-757-5711

Fax: 586-758-6996

Web: www.INFO@psidpumps.com

Indiana

485 N State Route 341 South

Mellott, IN 47958

Phone: 765-295-2206

Fax: 765-295-2243

Web: www.process-systems-inc.com

Worldwide:

Ruthmann Pumpen

Northberger Strabe 60

Eschweiler Germany D-52249

Phone: +49 (0) 2403 5595 0

Fax: +49 (0) 2403 5595 20

Web: www.ruthmannpumpen.de

Birmingham Pump

Unit 7 Network Park

Duddleston Mill Road

Satley, Birmingham England B81AU

Phone: +44 (0) 121 503 3000

Fax: +44 (0) 121 503 3002

Web: www.birminghampumps.co.uk

Guan Shen Industrial Pumps

(Shanghai) Company

广申工业泵 (上海) 有限公司

Building D, Room 416

No. 188 East Jiagwan Road

Shanghai, 200081

P.R. CHINA

上海市东江湾路 188 号 D 栋 416 室

Phone: 86-21-33872056

Phone: 86-21-33872058

Fax: 86-21-33872057

电话: 86-21-33872056

86-21-33872058

86-21-33872057

86-21-33872056

86-21-33872058

86-21-33872057

86-21-33872056

86-21-33872058

86-21-33872057

86-21-33872056

86-21-33872058

86-21-33872057

86-21-33872056

86-21-33872058

86-21-33872057

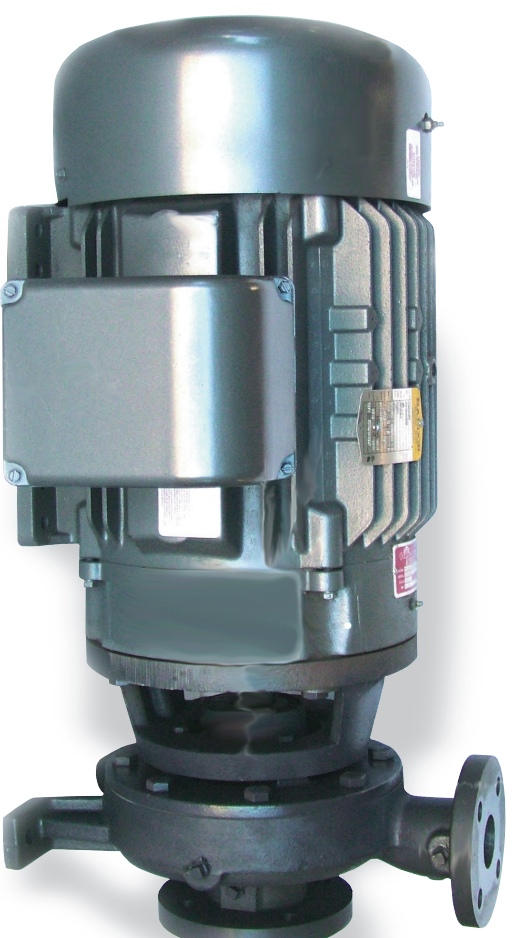
86-21-33872056

General Service Industrial Pumps



A RUTHMAN COMPANY

CL-CC Series



**RUTHMAN
COMPANIES**



**RUTHMAN
COMPANIES**

CL-CC Series

Specifications

General Service Industrial Pumps

- Capacities to 1600 GPM
- Heads to 700 feet
- Temperatures to 250° F (121° C)
- Pressures to 300 PSIG



Performance Features For General Service

- **Pump Reliability**
- Cast Stainless Steel & Iron Construction
- Foot Mounted Casing

Ease of Maintenance

- Back Pull-Out Design
- NEMA JPM Shaft Motor
- Self-Setting Mechanical Seal

Simple Installation

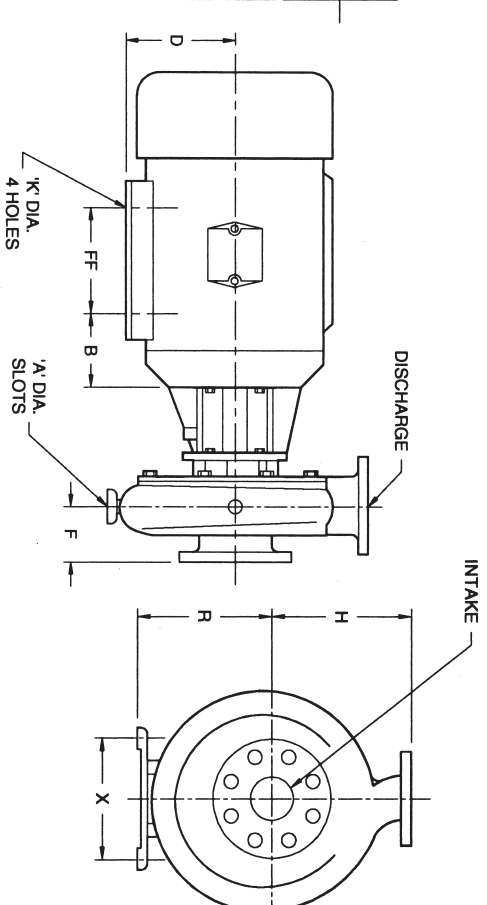
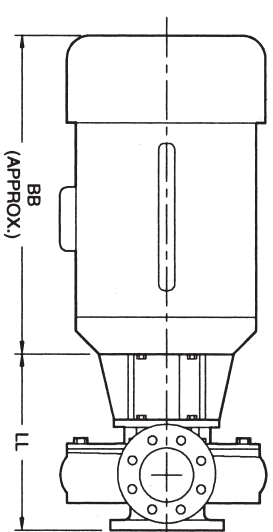
- Compact, Space Saving Close-Coupled Design
- No Pump/Motor Alignment Required
- ANSI Dimensional Casing

For general service pumping or industrial services, the CL-CC Series is a perfect reliable and economical solution. The close-coupled design and ANSI dimensional casing make installation extremely simple. The CL-CC Series is also easy to operate and maintain with the added benefit of substantially reduced maintenance costs.

Services

Water Purification/Filtration
(Reverse Osmosis, Ultra Filtration)
Parts Cleaners/Washers
Deionized Water
Tank Transfer, Tank Cleaning
Bottle Washing
Waste Water
Scrubbers
Paint Systems
OEM Skids
Seal Water
Condensate
Boiler Circulation
Cooling Water, Electronics Cooling
Chillers
Batch Processing

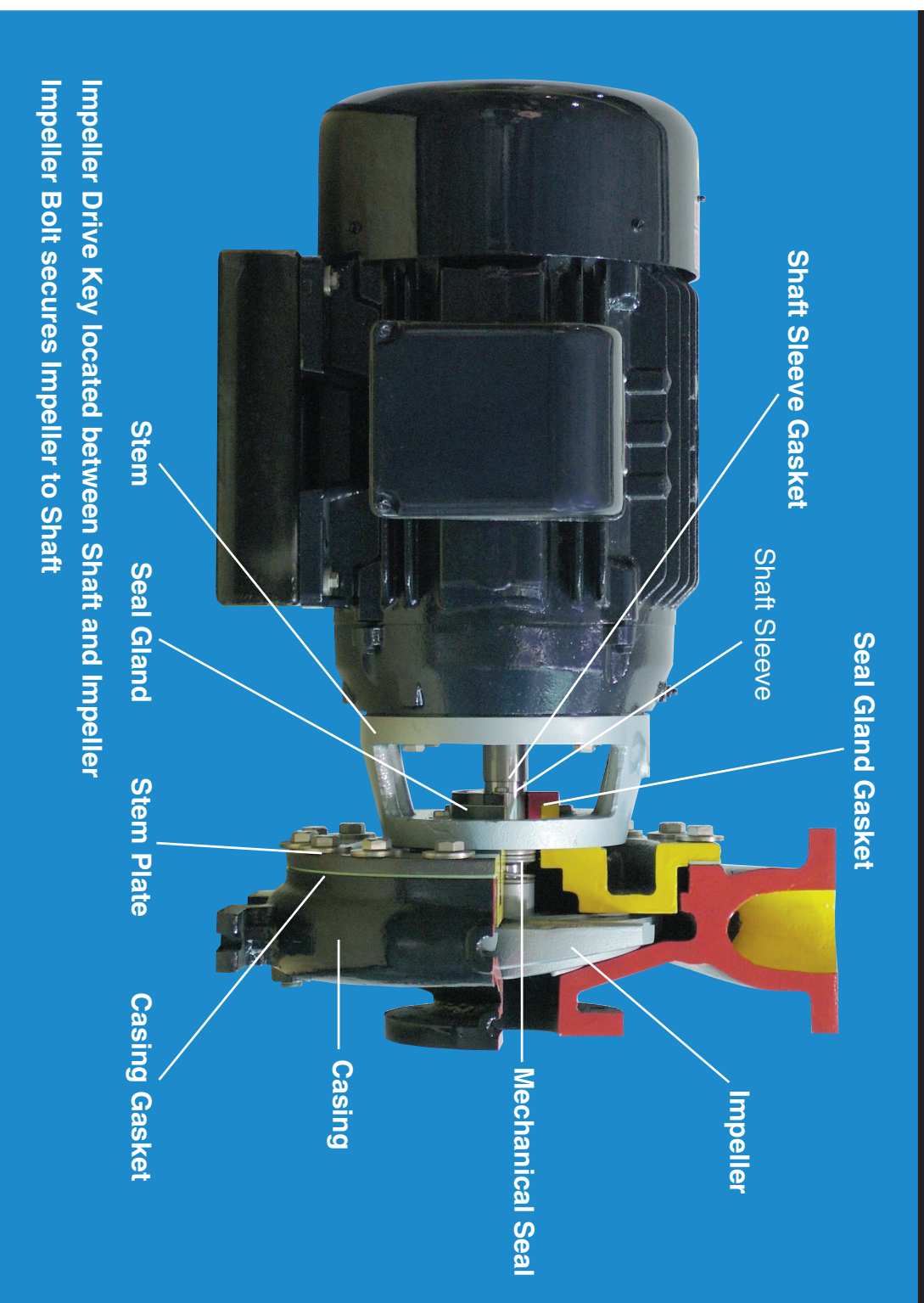
A complete range of NEMA JPM Shaft motors are available.



Model	H	F	X	R	LL	A	DISCH.	INTAKE
PCL-1 X 1 1/2-6SE	6.5	4	6	5.25	11.87	.62	1	1 1/2
PCL-1 X 1 1/2-8SE	6.5	4	6	5.25	11.56	.62	1	1 1/2
PCL-1 X 2-10SE	8.5	4	9.75	8.25	11.78	.62	1	2
PCL-1 1/2 X 3-6SE	6.5	4	6	5.25	11.88	.62	1 1/2	3
PCL-1 1/2 X 3-8SE	6.5	4	6	5.25	11.56	.62	1 1/2	3
PCL-1 1/2 X 3-10SE	8.5	4	9.75	8.25	11.78	.62	1 1/2	3
PCL-1 1/2 X 3-13SE	10.5	4	9.75	10	11.12	.62	1 1/2	3
PCL-2 X 3-6SE	6.5	4	6	5.25	11.25	.62	2	3
PCL-2 X 3-8SE	9.5	4	9.75	8.25	11.56	.62	2	3
PCL-2 X 3-10SE	9.5	4	9.75	8.25	11.78	.62	2	3
PCL-2 X 3-13SE	11.5	4	9.75	10	11.12	.62	2	3
PCL-3 X 4-8SE	11	4	9.75	8.25	11.56	.62	3	4
PCL3X4-8B-SE	11	4	9.75	8.25	11.56	.62	3	4
PCL-3 X 4-10-SE	11	4	9.75	8.25	11.5	.62	3	4
PCL-3 X 4-10B-SE	12.5	4	9.75	10	11.5	.62	3	4
PCL-3 X 4-13SE	12.5	4	9.75	10	11.75	.62	3	4
PCL-4 X 6-10SE	13.5	4	9.75	10	11.5	.62	4	6
PCL-4 X 6-13SE	13.5	4	9.75	10	11.75	.62	4	6
NEMA FR. SIZE	BB	D		FF	B	'K' DIA. HOLES		
143JP	10.62	3.5	-	4	2.87			.34
145JP	11.62	3.5	-	5	2.87			.34
182JP	12.68	4.5	-	4.5	3.5			.40
184JP	13.68	4.5	-	5.5	3.5			.40
213JP	15.37	5.25	-	5.5	4.5			.40
215JP	16.87	5.25	-	7	4.5			.40
254JP	19.5	6.25	-	8.25	4.75			.53
256JP	21.25	6.25	-	10	4.75			.53
284JP	21.56	7	-	9.5	4.75			.53
286JP	23.06	7	-	11	4.75			.53
324JP	23.93	8	-	10.5	5.25			.65
326JP	25.43	8	-	12	5.25			.65

CL-CC Series Parts List

Pump Selection Curves



Ordering Information

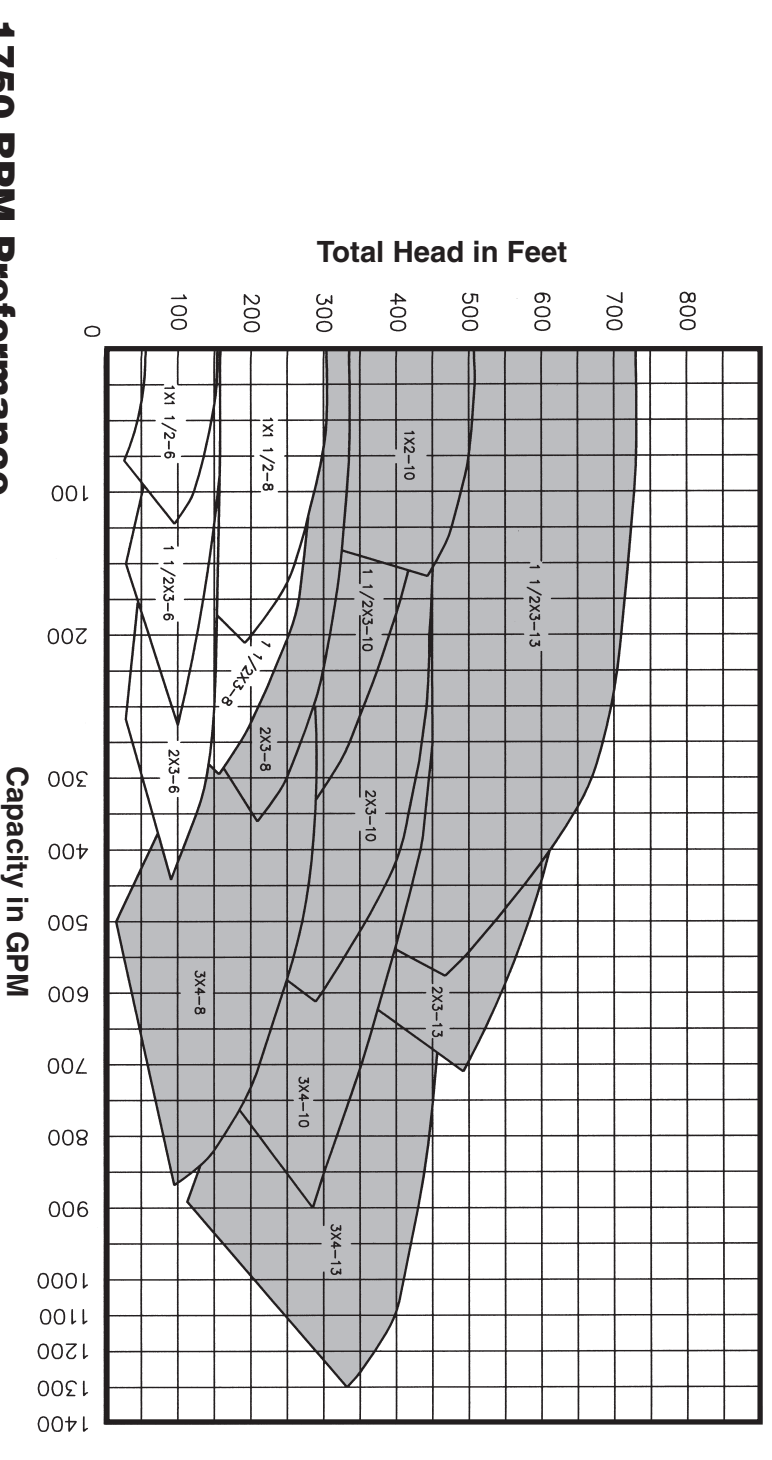
Order the Gusher CL-CC Series Pump to meet your needs by model name. The model name should be specified as follows:

Back Pull-out Design	Max Size Impeller	Closed-Coupled	Material (See Chart Below)
PCL <input type="checkbox"/>	X <input type="checkbox"/>	X <input type="checkbox"/>	SE <input type="checkbox"/> - <input type="checkbox"/> CC <input type="checkbox"/> - <input type="checkbox"/> 4 <input type="checkbox"/> - <input type="checkbox"/>
Center Line	Discharge Size	Suction Size	Semi-enclosed Impeller
			12 O'clock Discharge Position

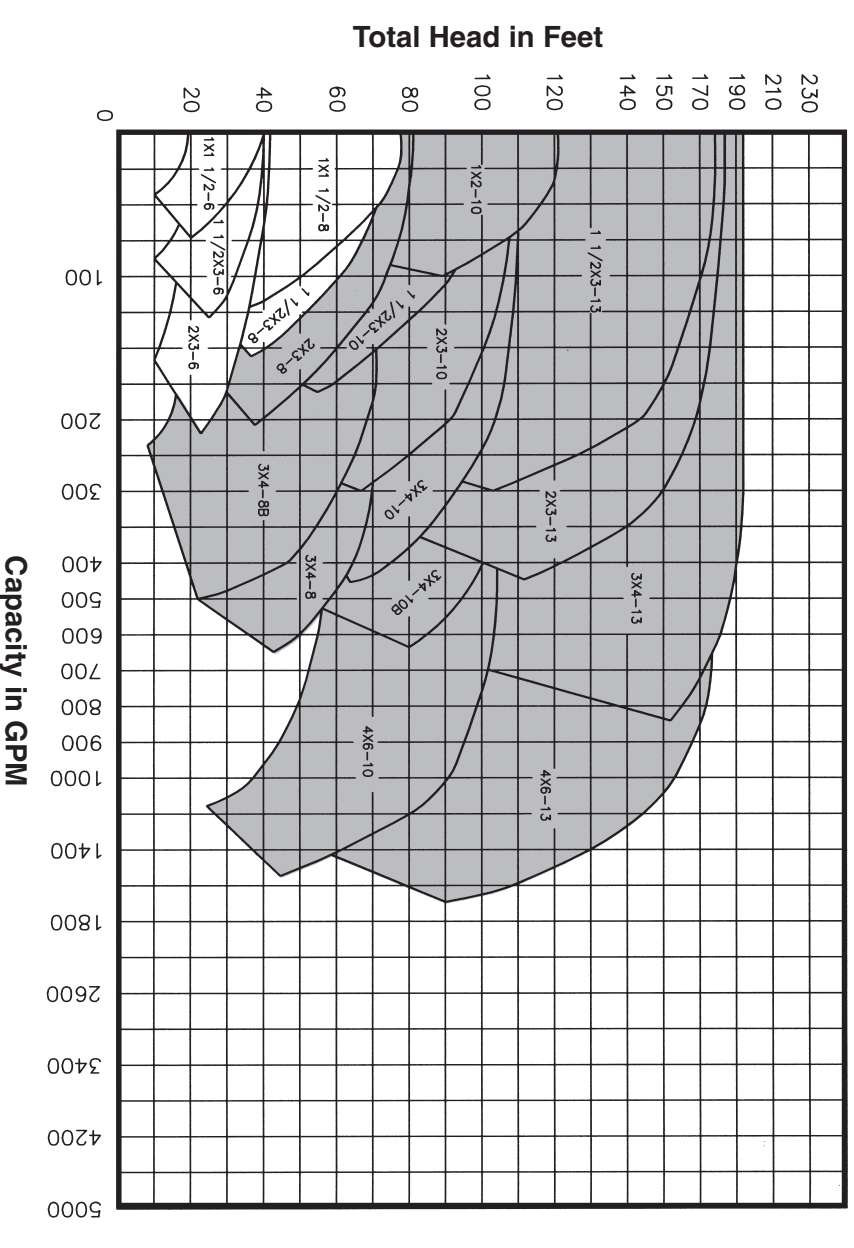
Materials of Construction

Material Designation	Type	Description
A	All Iron	Cast Iron Construction
B	Stainless Steel	316 Stainless Steel Wetted Parts
C	Stainless Steel Fitted	316 Stainless Steel Shaft and Impeller

3450 RPM Performance



1750 RPM Performance



CL-CC Series

Gusher Series CL-CC General Service Industrial Pumps

Design Features for a Wide Range of Industrial Services

NEMA JPM Shaft Motor

Commercially available motors eliminate need to stock "special" motors. Available in open drip-proof, total enclosed fan cooled and explosion-proof.

Renewable Shaft Sleeve

Stainless steel shaft sleeve protects motor shaft from corrosion.

Cast Impeller

Industrial Duty Casing

Cast with generous wall sections, provides extended pump life on corrosive/erosive service. ANSI dimensional for ease of installation. ANSI Class 150 flanges are standard.

Casing Drain

Close-Coupled

Design eliminates need to perform time consuming pump/motor alignment.

Single Inside Mechanical Seal

Elastomeric bellows seal making it simple to install, easy to maintain.

Rigid Casing Feet

Reduces effect of pipe loads on pump performance. Facilitates back pull-out for ease of maintenance.

